

4

3

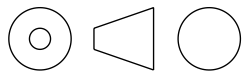
2

1

- NOTES:
- 1. TORQUE ARM MATERIAL: STAINLESS STEEL
 - 2. ITEMS SUPPLIED WITH TORQUE ARM
SCREWS: [4] STAINLESS STEEL M8 x 1.25 x 20
WASHERS: [4] STAINLESS STEEL 8MM
 - 3. TORQUE ARM CAN BE INSTALLED ON EITHER SIDE OF GEARBOX

BODINE ELECTRIC COMPANY

PART NO./REV: INFM0442 A	
DESCRIPTION: KIT ACCESSORY TORQUE ARM 50JW/H GEARMOTOR	
SHEET: 1/1	UNLESS OTHERWISE SPECIFIED:
SCALE: 2:3	UNITS ARE IN INCHES [mm]
B	TOLERANCES: .XX:±.01 .XXX:±.005
	ANGLES: X°:±3° X.X°:±0.5°

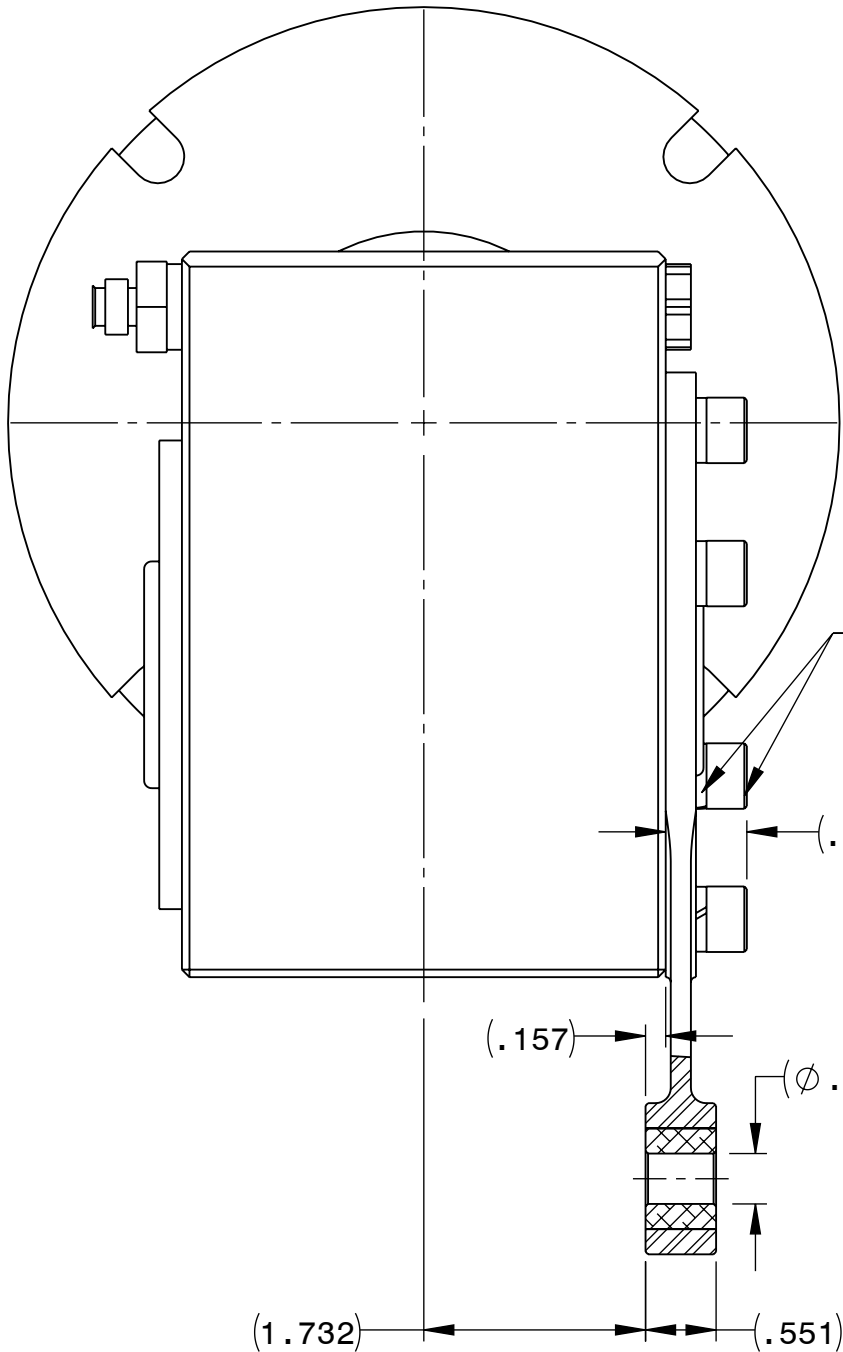


D

C

B

A

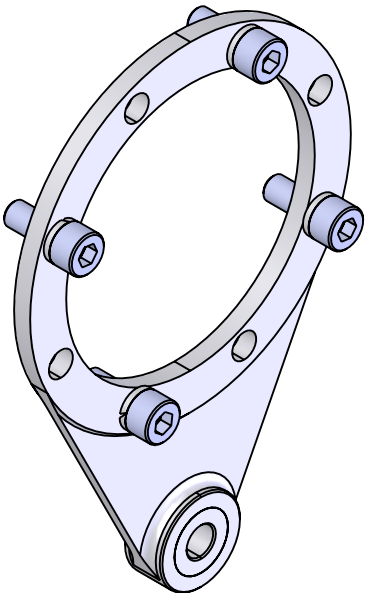


[4] SCREWS M8 x 1.25 x 20
TORQUE TO 16 LB-FT
[4] WASHERS 8MM

(Ø 4.724)

(3.937)

(R.591)



D

C

B

A

REPRESENTATIVE OF MODEL NUMBER(S) :
0942

4

3

2

1