

BODINE ELECTRIC COMPANY

PART NO./REV:

INFM0440

A

DESCRIPTION:

KIT TERMINAL BOX

SHEET:

1/1

SCALE:

1:1

C

UNLESS OTHERWISE SPECIFIED:

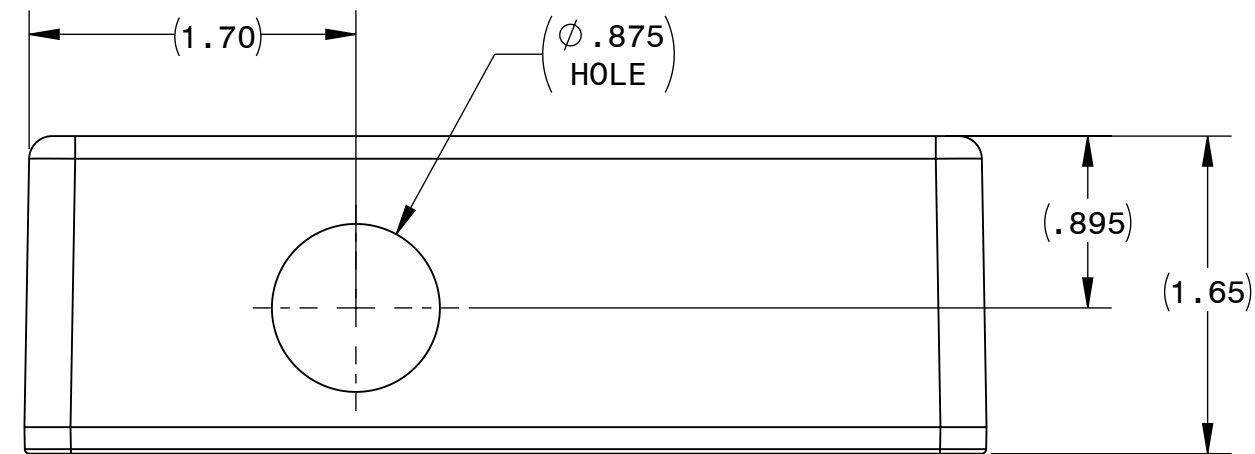
UNITS ARE IN INCHES [mm]

TOLERANCES: .XX:±.01 .XXX:±.005

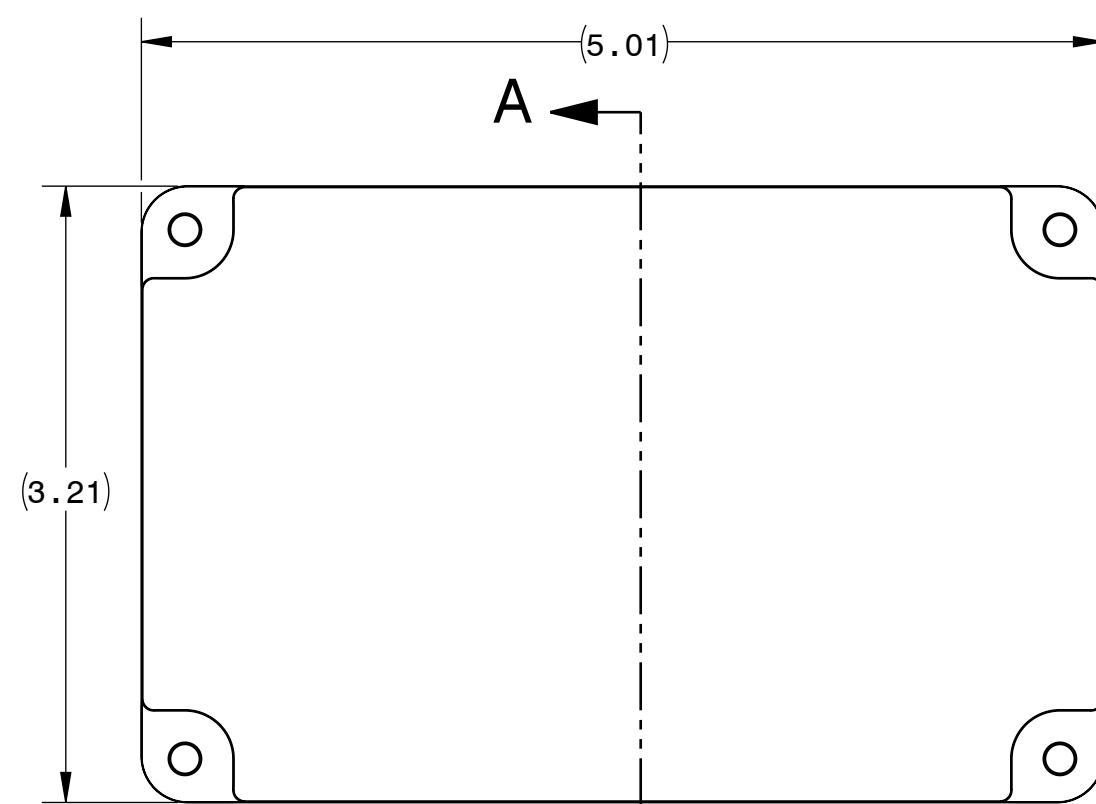
ANGLES: X°:±3° X.X°:±0.5°

NOTES:

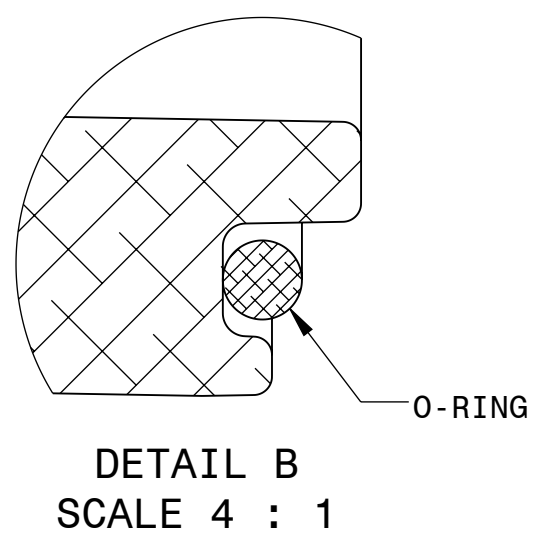
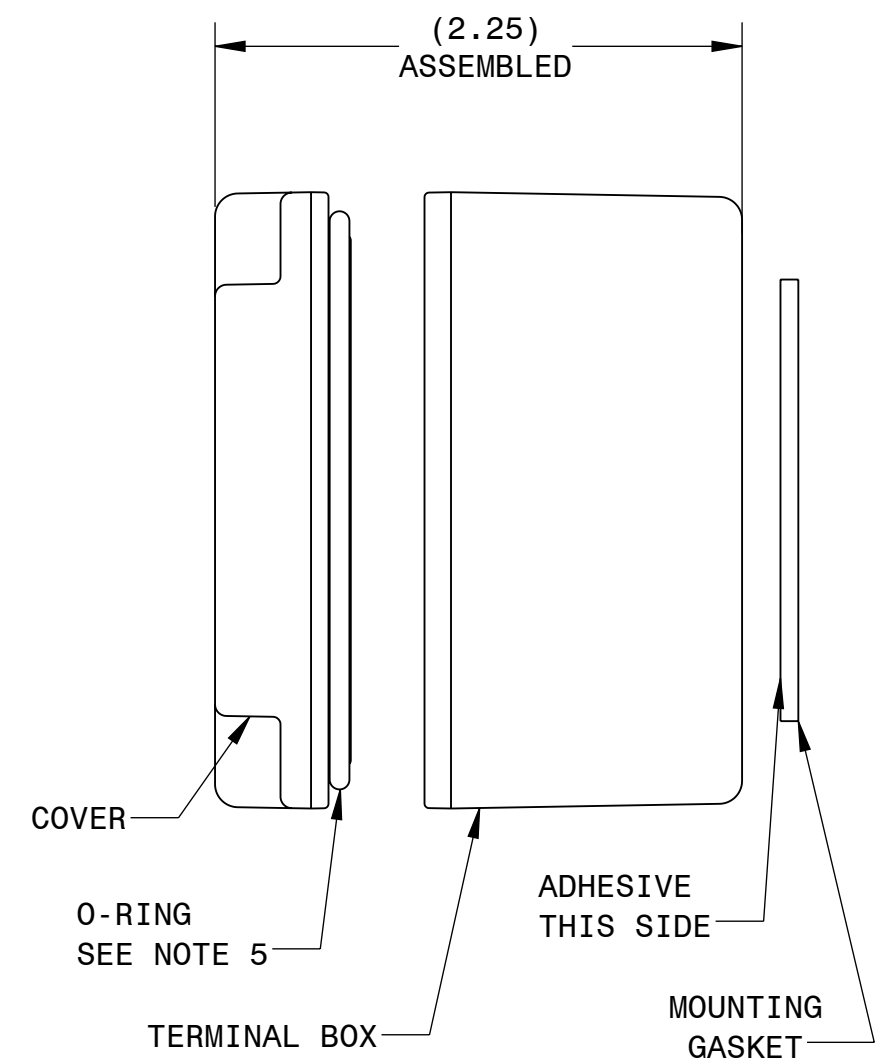
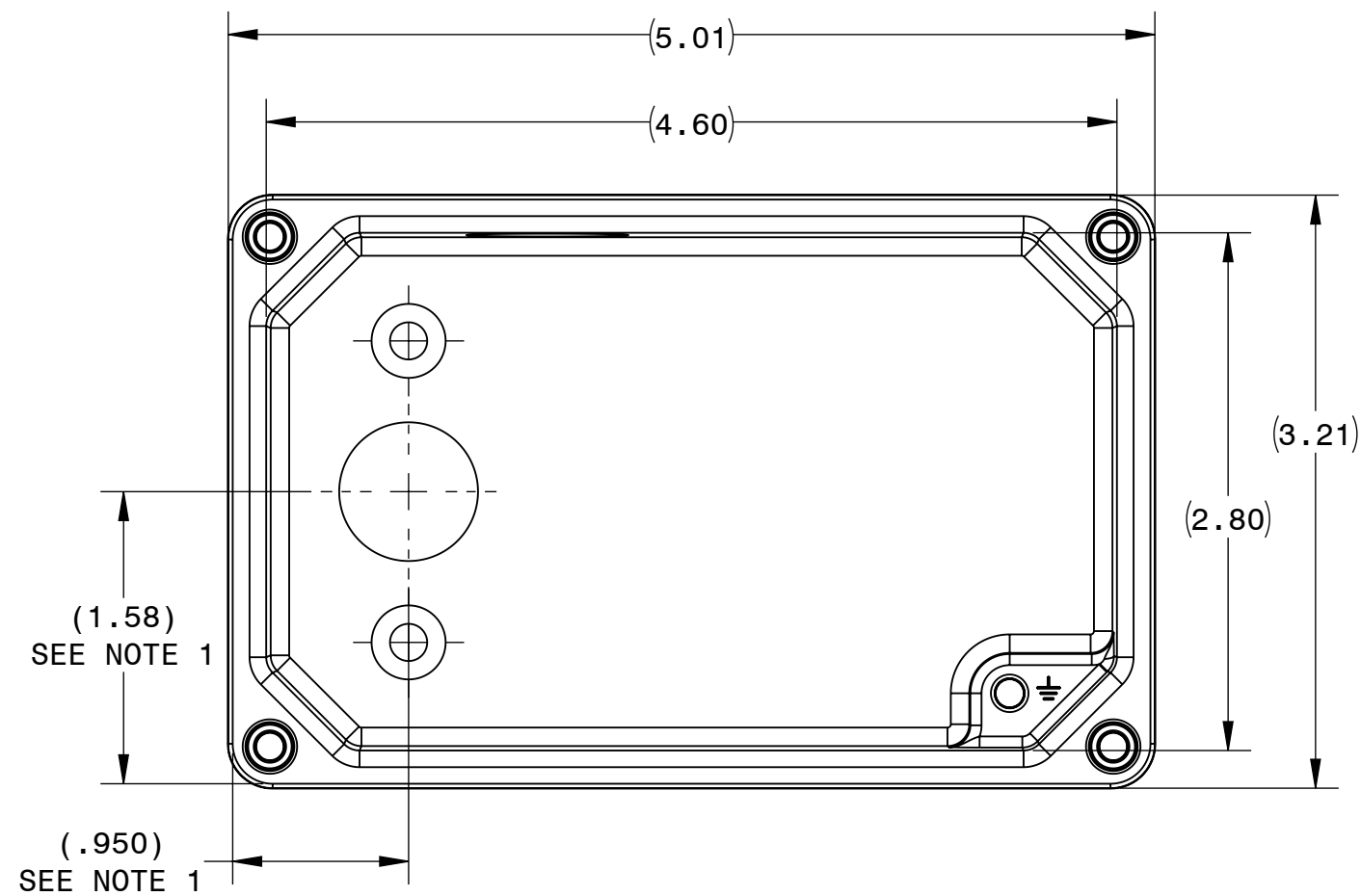
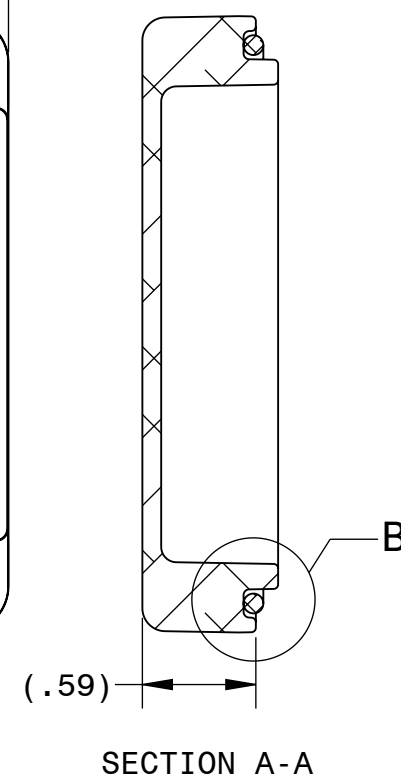
1. DIMENSIONS REFERENCED AT BOTTOM OF CASTING
2. TERMINAL BOX MATERIAL: ALUMINUM PAINTED BLACK
3. ITEMS SUPPLIED WITH TERMINAL BOX AND COVER:
 - [1] EPDM O-RING - COVER TO TERMINAL BOX
 - [1] EPDM GASKET - TERMINAL BOX TO WIRING COMPARTMENT SHIELD
 - [4] #8-32 SCREWS & #8 WASHERS TO SECURE COVER [TORQUE 14-18 LB-IN]
 - [2] #10-32 SCREWS TO SECURE TERMINAL BOX TO CENTER RING
 - [1] #10-32 SCREW & #10 WASHER FOR GROUND LEAD
 - [1] LEAD EXIT BUSHING FOR .750 HOLE
4. INSERT O-RING INTO COVER GROOVE BEFORE ASSEMBLY. DO NOT TWIST.
5. POSITION PRECUT GASKET HOLES WITH TERMINAL BOX HOLES BEFORE ASSEMBLY. (USE SCREWS AND BUSHING FOR EASE OF ALIGNMENT)



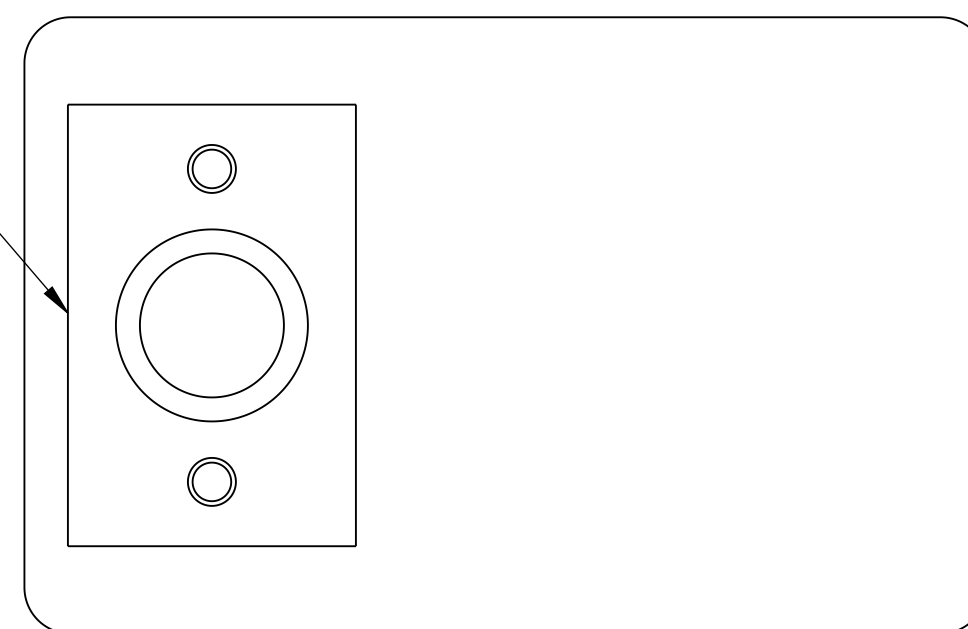
BOX



COVER



SEE NOTE 5



REPRESENTATIVE OF MODEL NUMBER(S):

0988

