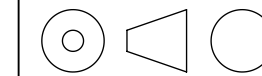


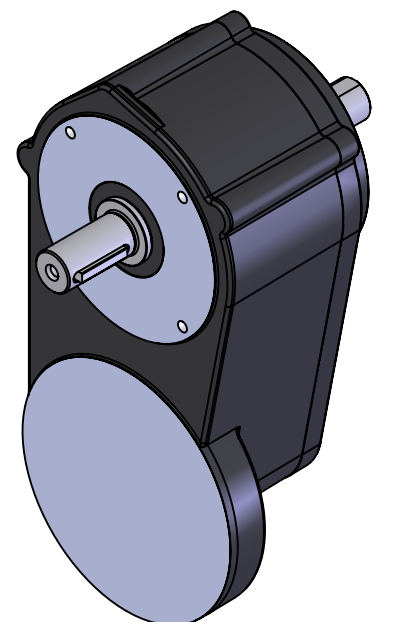
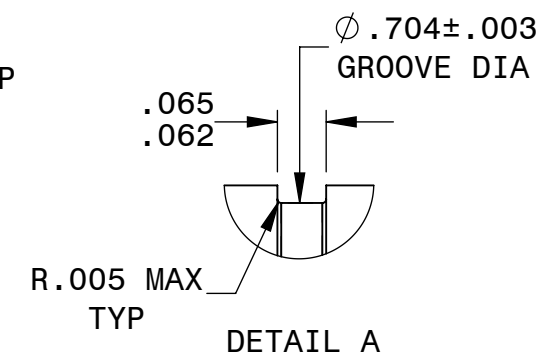
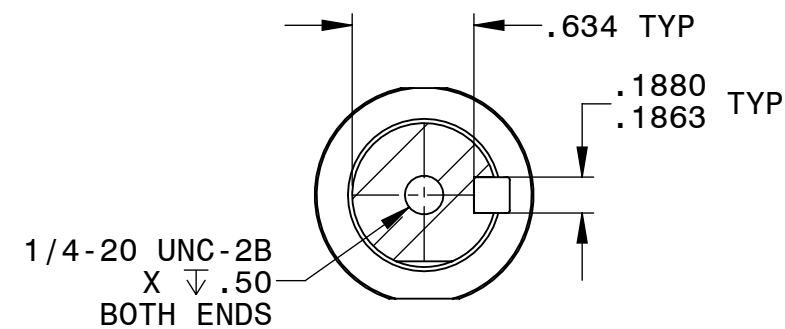
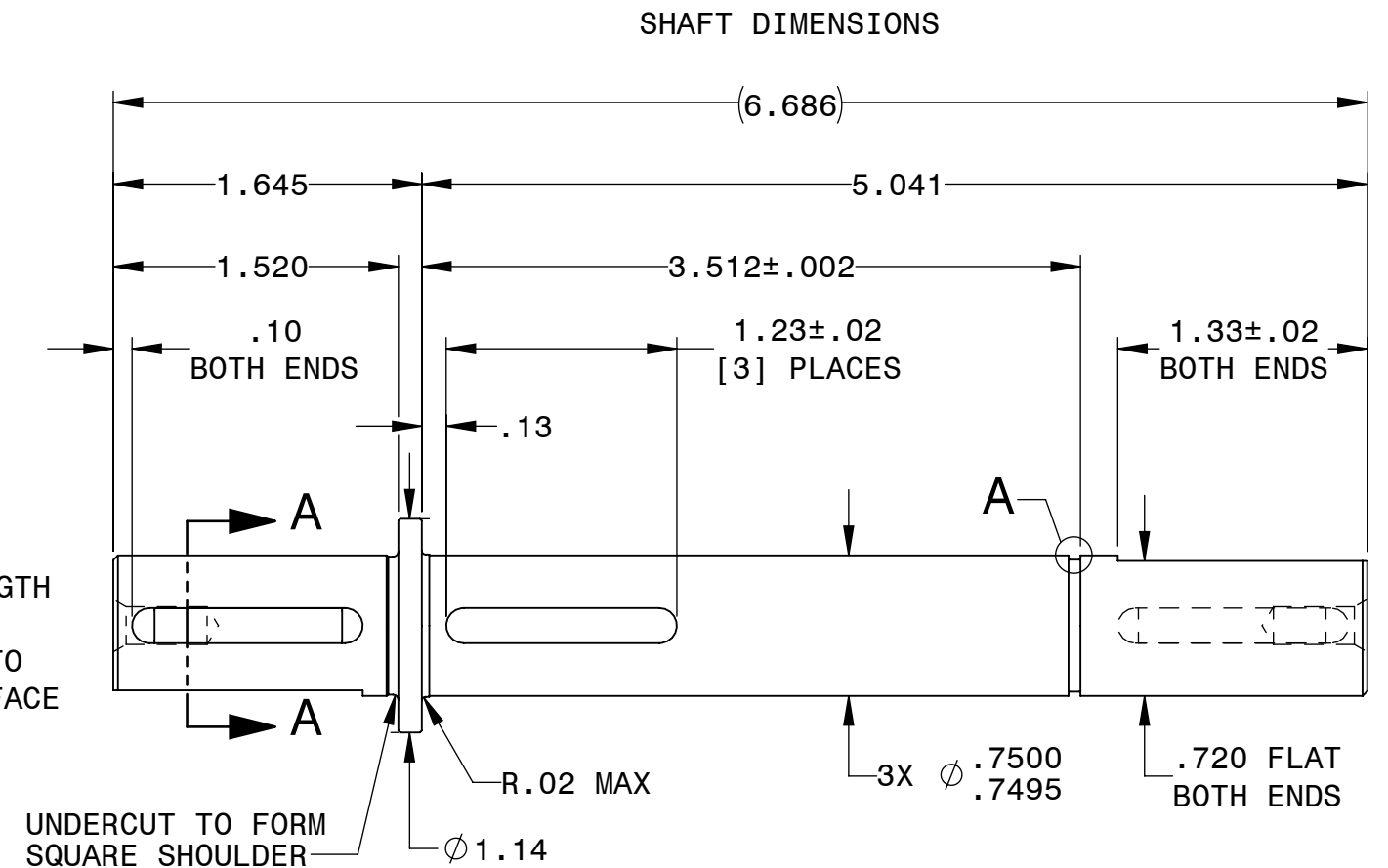
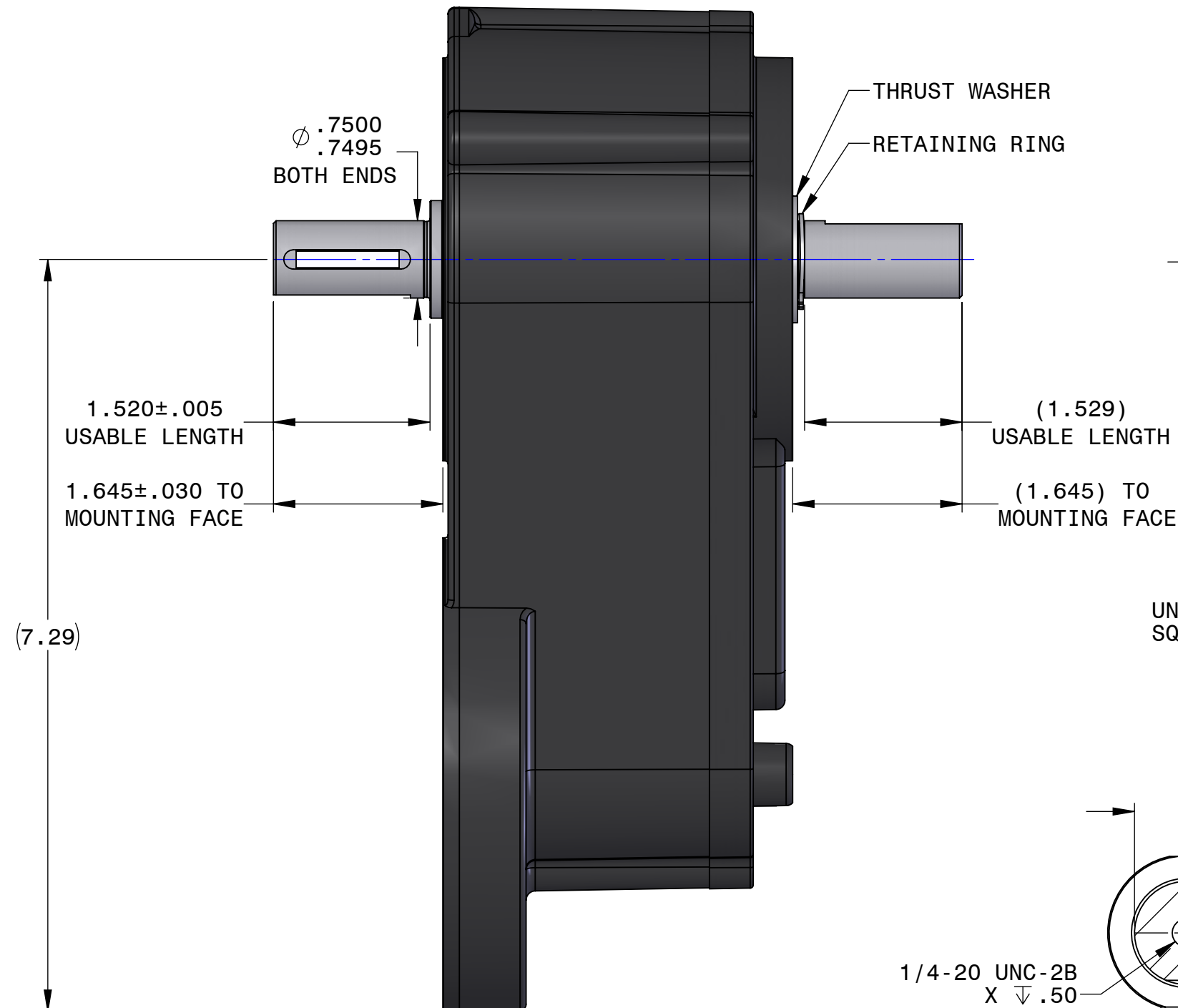
- NOTES:
1. MATERIAL: 316 STAINLESS STEEL
 2. ITEMS SUPPLIED WITH SHAFT
KEYS: [3] STAINLESS STEEL .1875 SQ X 1.00 LONG
THRUST WASHER: [1] $\varnothing 1.23$ OD X $\varnothing .757$ ID X .0615 THICK
RETAINING RINGS: [2] ROTOR CLIP P/N BSH-75 (1 SPARE)

BODINE ELECTRIC COMPANY

PART NO./REV: INFM0435 A	
DESCRIPTION: KIT ACCESSORY SHAFT HG/H GEARMOTOR $\varnothing .750$ X 1.645 EXTENSIONS	
SHEET: 1/1	UNLESS OTHERWISE SPECIFIED: UNITS ARE IN INCHES [mm] TOLERANCES: .XX:±.01 .XXX:±.005 ANGLES: X°:±3° X.X°:±0.5°
SCALE: 1:1	
B	



SHAFT KIT INSTALLED



REPRESENTATIVE OF MODEL NUMBER(S):

0933