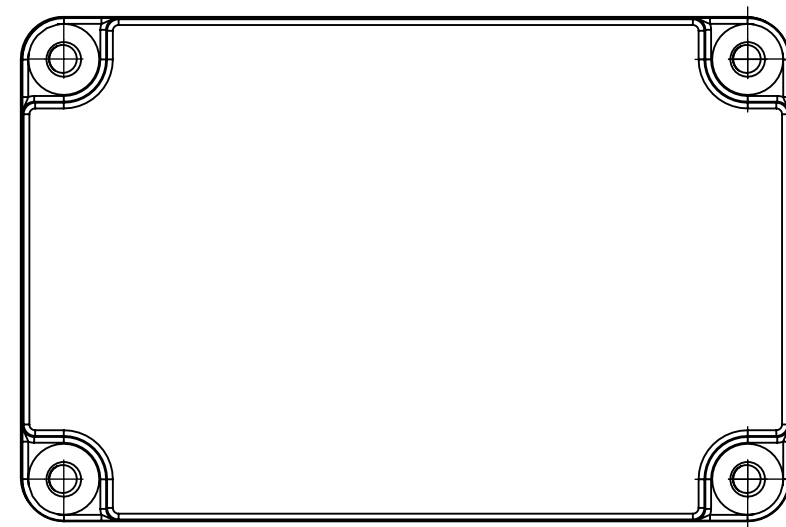
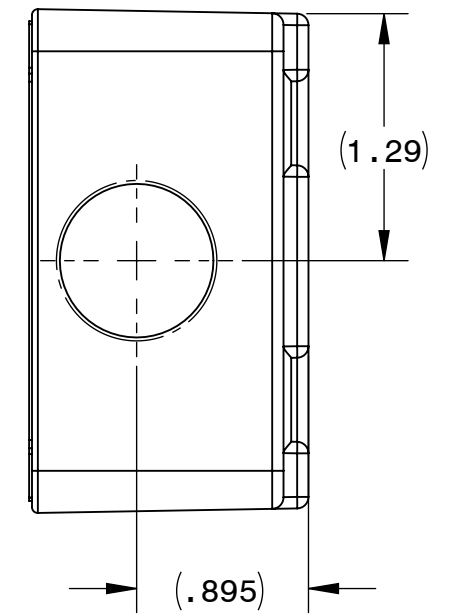
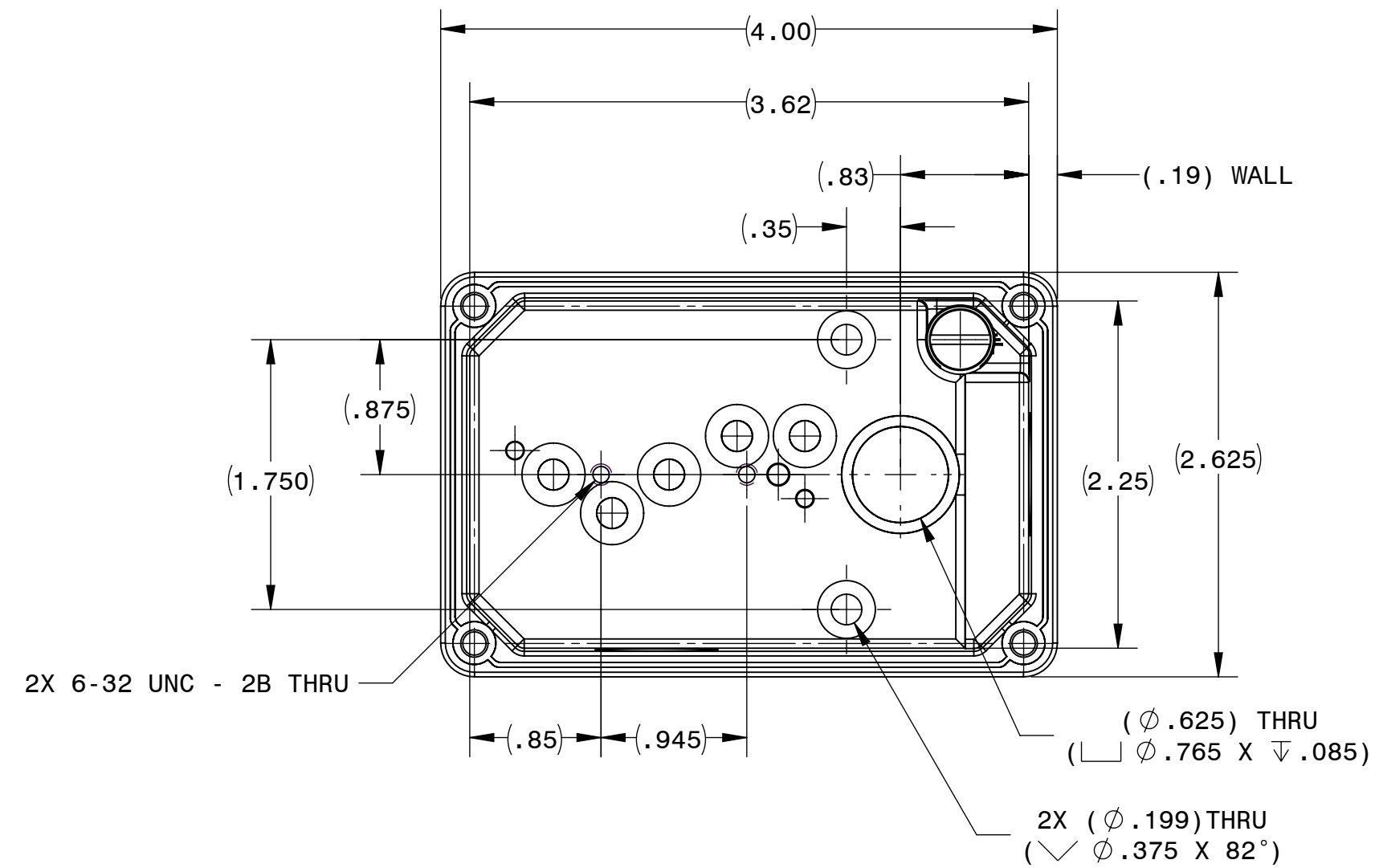
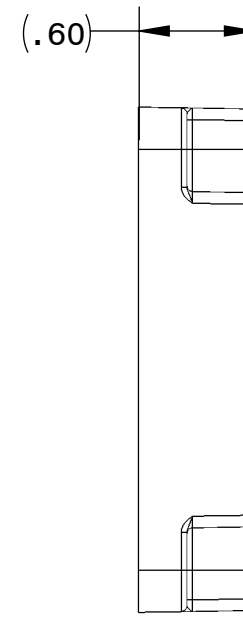
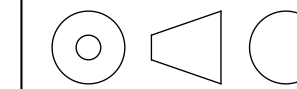


1. MATERIAL: ALUMINUM
2. ITEMS SUPPLIED WITH TERMINAL BOX AND COVER
 - GASKET CORK FOR TERMINAL BOX AND COVER
 - GASKET RUBBER FOR TERMINAL BOX AND RING
 - 4X 8-32 SCREWS & 4X #8 WASHERS [TORQUE 14-18 LB-IN]
 - 10-32 SCREW & #10 WASHER FOR GROUND LEAD
 - 2X 6-32 SCREWS FOR CIRCUIT TERMINAL BLOCK
 - 2X 10-32 SCREWS FOR TERMINAL BOX AND SHIELD
 - BUSHING SNAP
 - CIRCUIT TERMINAL BLOCK
 - PG11 THREAD PLUG

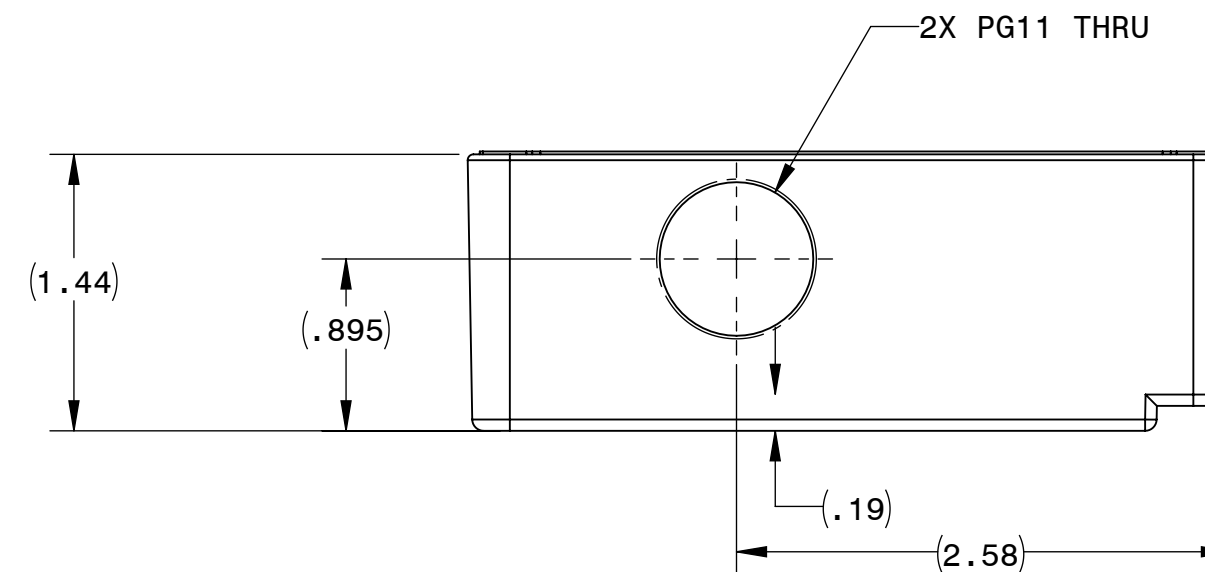
PART NO./REV:	INFM0058	B
---------------	----------	---

DESCRIPTION:	KIT TERMINAL BOX 30R METRIC
--------------	-----------------------------

SHEET: 1/1	UNLESS OTHERWISE SPECIFIED UNITS ARE IN INCHES [mm]
SCALE: 1:1	
C	



COVER



BOX

REPRESENTATIVE OF MODEL NUMBER(S):

1982

