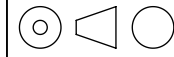


NOTES:

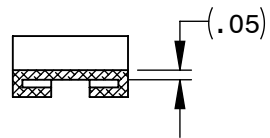
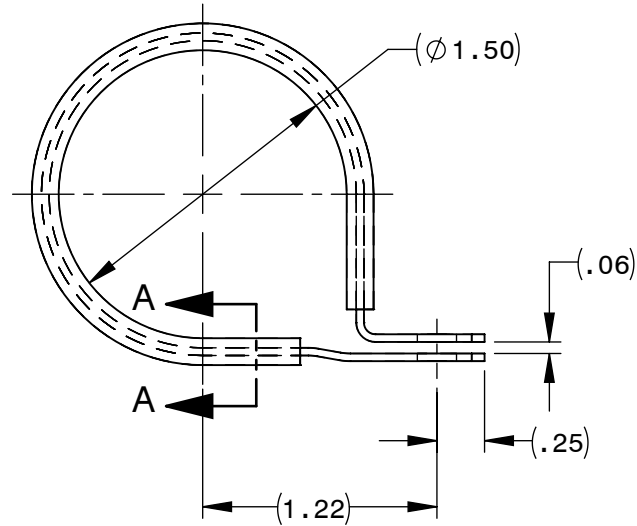
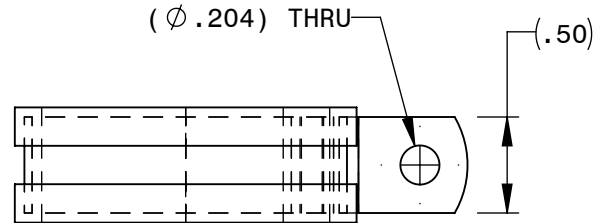
1. CLAMPS FURNISHED IN THE NORMAL OPEN SPRINGBACK CONDITION

BODINE ELECTRIC COMPANY

PART NO./REV: 54701013 B

MODEL FILE: 54701013
ECN: 20150399 DESIGNER: WAADESCRIPTION:
CLAMP LOOP CUSHIONED $\phi 1.50$ X .50
WIDTH STAINLESS STEELSHEET:
1/1
SCALE:
1:1

A

UNLESS OTHERWISE SPECIFIED:
UNITS ARE IN INCHES [mm]
TOLERANCES: .XX: $\pm .01$.XXX: $\pm .005$
ANGLES: X $^{\circ}$: $\pm 3^{\circ}$ X.X $^{\circ}$: $\pm 0.5^{\circ}$ 

SECTION A-A

ENGINEERING SPECIFICATIONS

MANUFACTURER	STAR TECHNOLOGIES, LLC
MANUFACTURER P/N	STAR-SS-24E
CLAMP MATERIAL	300 SERIES STAINLESS STEEL .040 THICK
CUSHION MATERIAL	GENERAL PURPOSE EPDM

